

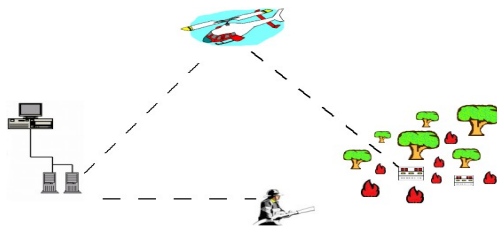
DTLink Wildfire Detection System - How It Works

Introduction

The collection of data in real time from wild fires, allows the predictive analysis of the behavior of a fire. The DTLink WDS uses Fire Cells and UV Fire Detectors in a self-organized wireless network that will transmit data directly to multiple sites for analysis.

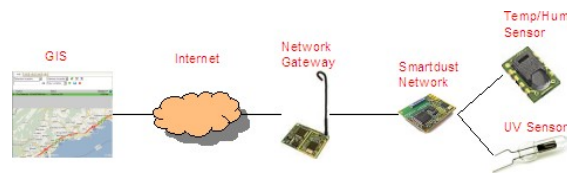
System Architecture

The system consists of a level of thermal sensors and UV fire detectors, the wireless network transmission of data, the geographical display of the surveyed area, and the data management system.



Data Transmission

The precise and without mistakes transmission of data from the sensors to the data management is done using fully certified procedures.



Ultra low power consumption

Every wireless node equipped with heat or UV sensors will not consume more than 2µAH with a battery life exceeding ten years.



Fire Cells

Heat Detectors that can be placed almost everywhere and detect fires through differential temperature measurement.



UV Fire Detectors

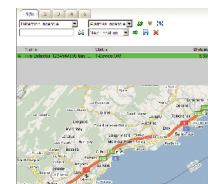
UV sensors that have the ability to detect the fire from afar. The specific functionalities of ultraviolet fire detectors complet the development of an integrated fire detection system.



The sensors are placed hidden on trees or on posts in 150-200 meters of distance between each other. Their placement is recorded precisely using GPS data. With an average distance of 40-50 meters you will need roughly 400 sensors per 1000 acres of land.

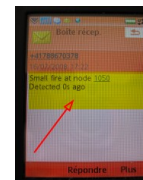
Geotagging System For The Survey & Management

The sensor network will transmit data, via Internet to the Geotagging System For The Survey & Management where the system administrator can have a complete picture of the area.

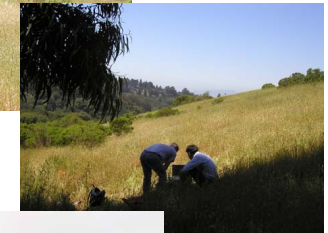


Alert SMS Messages

In case of a fire detection the system can be configured to send immediately an alert SMS message to the firefighters and others persons in charge.



Installation
Region
Recognition

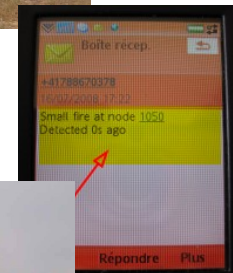


Sensor
Installation



Fire Starts !!

Immeidate Alert Of
Firefighters



Fire
Extinguished
In Time

Certified Representative